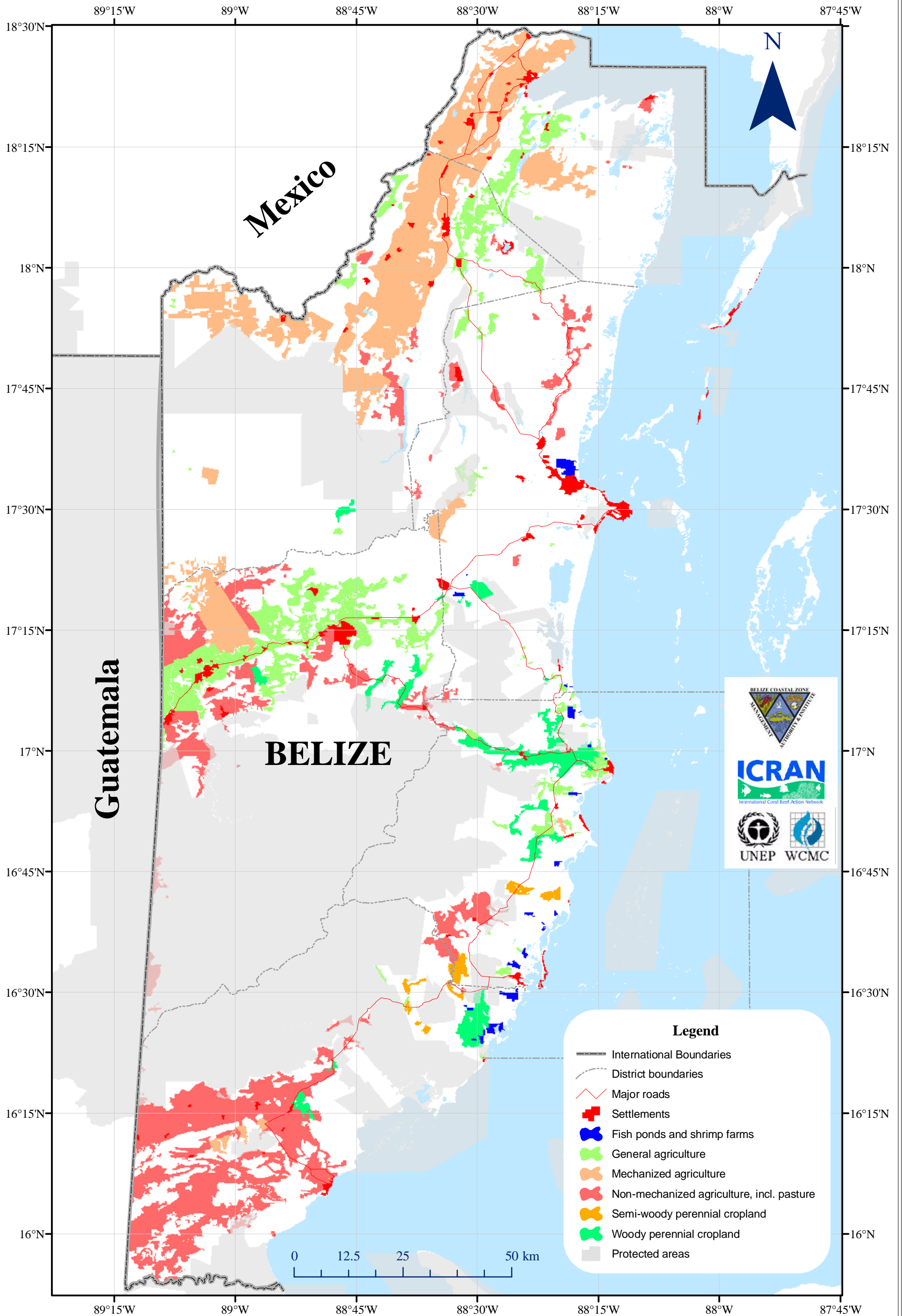


# Development of the Belizean Mainland (2004)

1:800,000



Prepared by Emil Cherrington of CZMAI / ICRAN-MAR project; developed land = 1.1 million acres (0.44 million hectares) of 5.6 million acres  
Data provided by Belize Tropical Forest Studies, CCAD, CZMAI, and U.K. Directorate of Overseas Surveys